



FurnFold

Folding cabinet/Wardrobe door system



Suitable for doors up to 15kg (30kg for two panels).



Top hung



Full technical support



Inframe and overlay doors



Easy to fit and adjustable

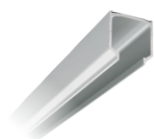


Door thickness: 16-30mm

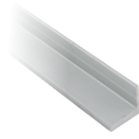
Furnfold bi-folding door track system for cabinet/wardrobe doors remains one of the most popular sellers in our range.

The Furnfold is the ideal lightweight bi-folding option for cabinet or wardrobe doors.

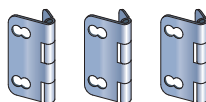
FurnFold Components



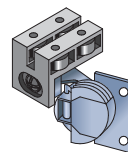
Aluminium top track



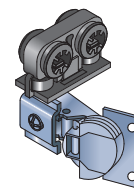
Aluminium lower profile



Hinges



Lower guide



Top roller

Fitting kit for 2 x doors left or 2 x doors right includes: 1 x top hinge roller and 3 x hinges

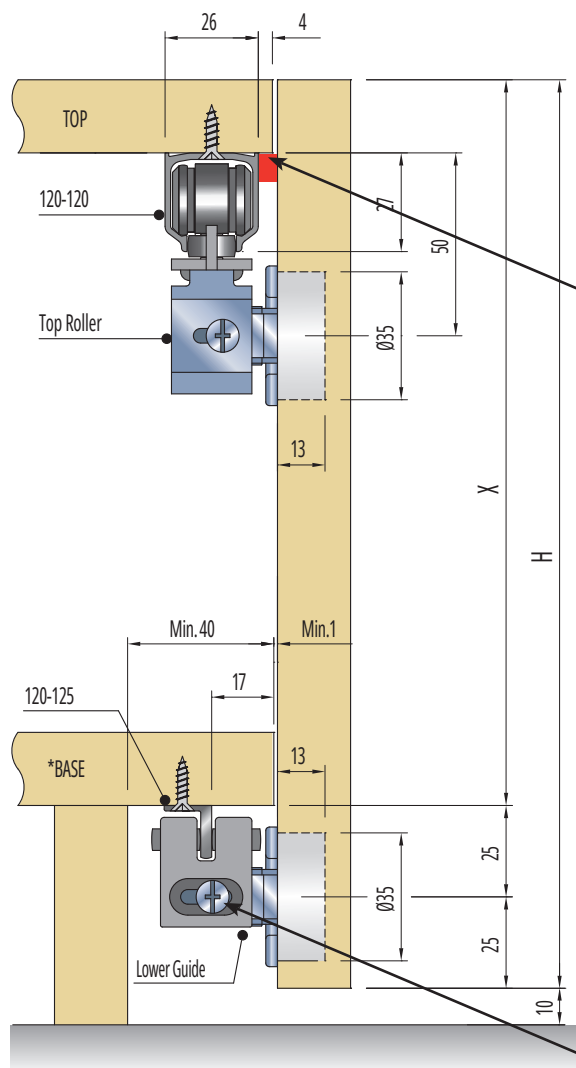
Fitting kit for 4 doors 2 x doors left + 2 x doors right includes: 2 x top hinge roller and 6 x hinges

	Description	Code
1.2 Metre Track	1.2 Metre top track, fitting kit for 2 doors (left or right) with lower track to suit	FF1200BT-2
	1.2 Metre top track, fitting kit for 4 doors (2 left 2 Right) with lower track to suit	FF1200BT-4
	1.2 Metre top track and fitting kit for 2 doors (left or right)	FF1200-2
	1.2 Metre top track, fitting kit for 4 doors (2 left 2 Right)	FF1200-4
2.4 Metre Track	2.4 Metre top track, fitting kit for 2 doors (left or right) with lower track to suit	FF2400BT-2
	2.4 Metre top track, fitting kit for 4 doors (2 left 2 Right) with lower track to suit	FF2400BT-4
	2.4 Metre top track and fitting kit for 2 doors (left or right)	FF2400-2
	2.4 Metre top track, fitting kit for 4 doors (2 left 2 Right)	FF2400-4
3.6 Metre Track	3.6 Metre top track, fitting kit for 2 doors (left or right) with lower track to suit	FF3600BT-2
	3.6 Metre top track, fitting kit for 4 doors (2 left 2 Right) with lower track to suit	FF3600BT-4
	3.6 Metre top track and fitting kit for 2 doors (left or right)	FF3600-2
	3.6 Metre top track, fitting kit for 4 doors (2 left 2 Right)	FF3600-4

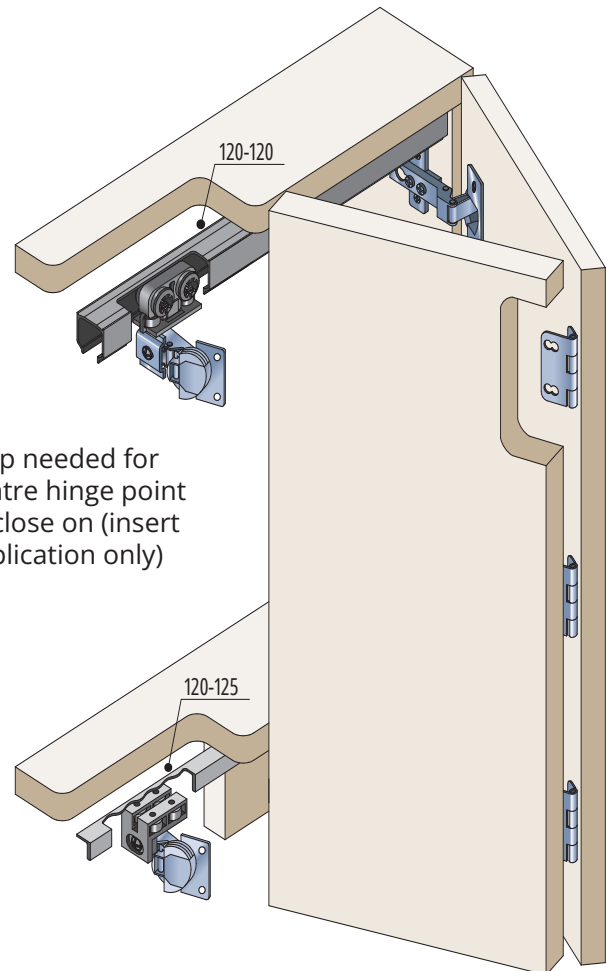


Specification

- Door thickness: 16mm - 30mm
- Suitable panel widths: Up to 500mm
- For inset and overlay applications
- Maximum of 2 doors folding each side



Stop needed for
centre hinge point
to close on (insert
application only)



Alternative
bottom guide
set up

