



Glide Pocket Door

Single and double sliding door system

Our Glide Pocket Door kit is a cost effective, innovative sliding solution, which creates more usable space than traditional hinged doors.

Completely adjustable, smooth rolling and easy to install; it's the perfect solution to your Pocket Door needs.



Glide Pocket Door Components



Timber header



Door hangers



Rubber buffer



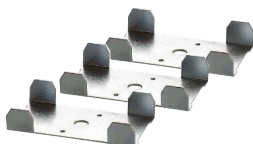
Spanner



Fixing screws



Support studs



Stud foot brackets



Pair door guides



Joint kit
For double pocket doors

Optional accessories

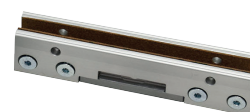
(Timber only)



Push to close buffer



Soft close
80kg capacity

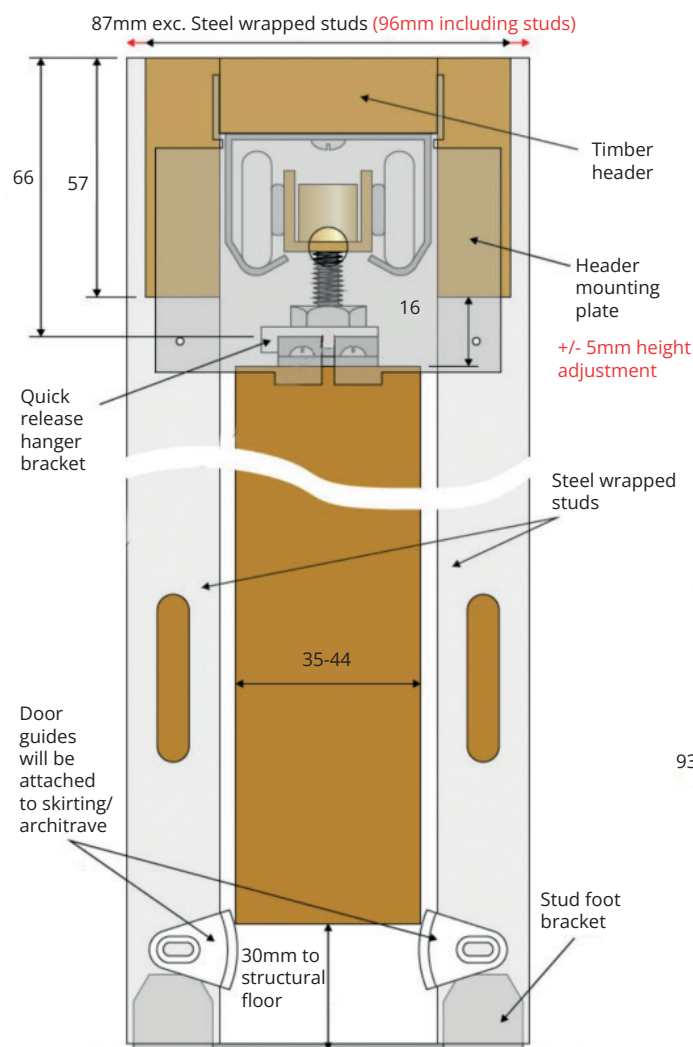


Glass door
bracket

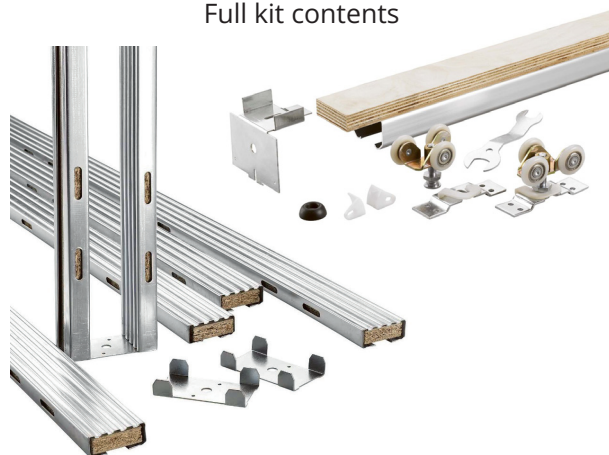
Description	Code
Single door - Glide pocket door kit 1 max door 915mm x 2032mm 90kg capacity (includes: 6 x support studs, 1 x timber header, 3 x stud foot brackets, 1 x pair of door hangers, 1 x pair door guides & screws, 1 x rubber buffer, 1 x spanner and 30 x fixing screws)	Glide1
Single door - Glide pocket door kit 2 max door 1200mm x 2400mm 90kg capacity (includes: 6x support studs, 1 x timber header, 3 x stud foot brackets, 1 x pair of door hangers, 1 x pair door guides & screws, 1 x rubber buffer, 1 x spanner and 30 x fixing screws)	Glide2
Double door - 2 x Glide pocket door kit 1 max door 915mm x 2032mm 90kg capacity and 1x joint kit	GLIEDOUBLE1
Double door - 2 x Glide pocket door kit 2 max door 1200mm x 2400mm 90kg capacity and 1x joint kit	GLIEDOUBLE2
Push to open buffer	PDPL
Glide pocket door soft close (80kg capacity)	GlideSC80
Glass door bracket	PDGDK

Specification	
Glide 1	Glide 2
Maximum door panel weight: 90kg	Maximum door panel weight: 90kg
Door width: 608mm - 915mm	Door width: 608mm - 1200mm
Maximum door height: 2032mm	Maximum door height: 2400mm
Door thickness: 35mm - 44mm	Door thickness: 35mm - 44mm

Timber door details



Full kit contents



Glass door details

