

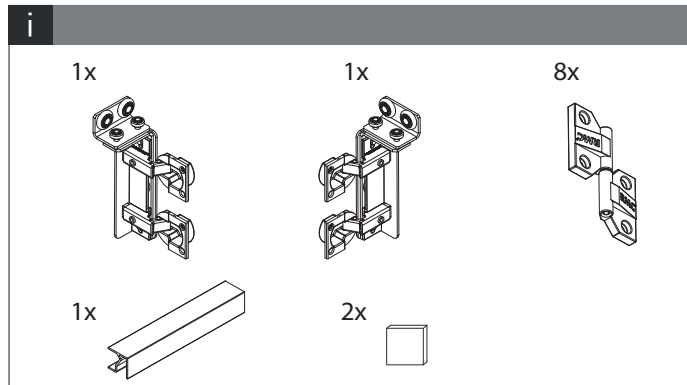
# Durafold Installation Manual

**i**

- Nickel-plated mechanisms and plastic cover
- Stable movement thanks to two-axis guidance
- 50 kg carrying capacity (25kg per door)
- Compatible wide range of hinge options
- Compatible with 16-25 mm cover thickness
- Using with 2 or 2+2 doors
- Right and left door option
- Wide usage area with maximum 110 degree opening
- Ease of use with the same door dimensions
- Easy assembly and disassembly

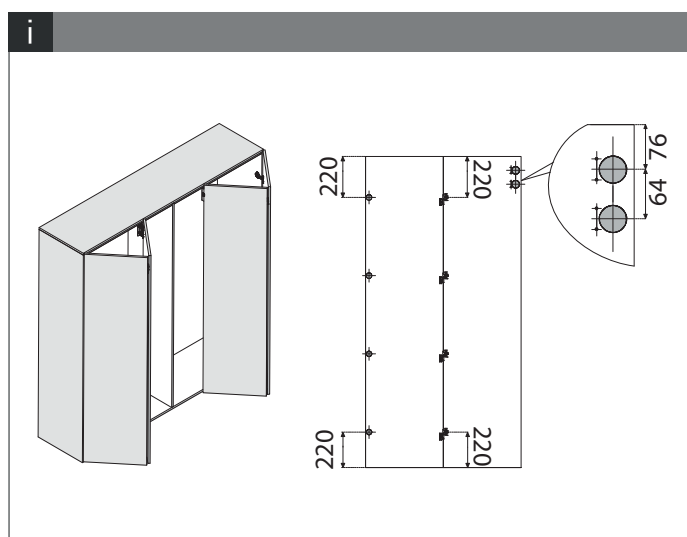
**i**

1x 1x 8x

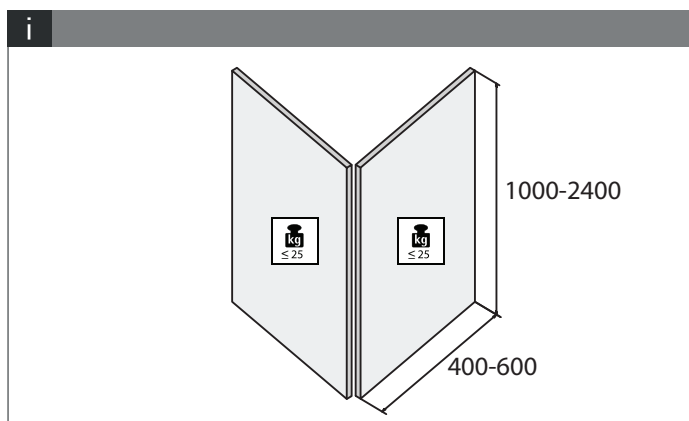


1x 2x

**i**



**i**



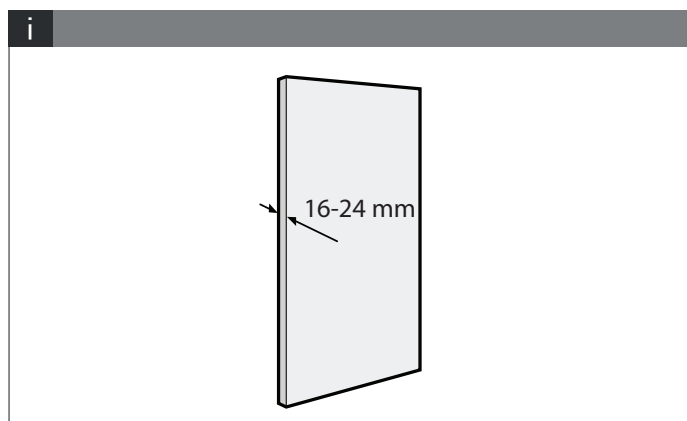
1000-2400

400-600

≤ 25 kg

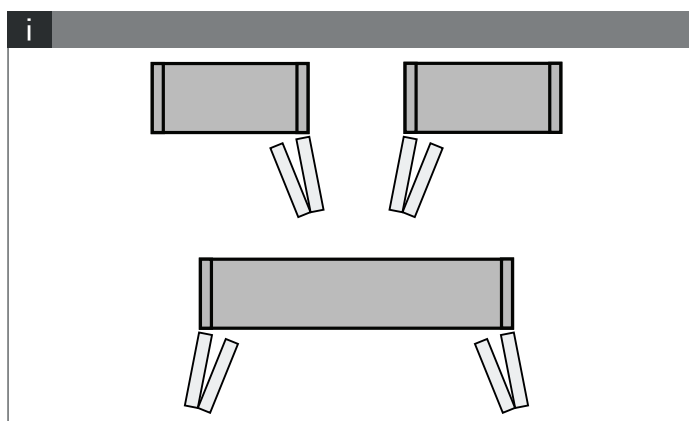
≤ 25 kg

**i**

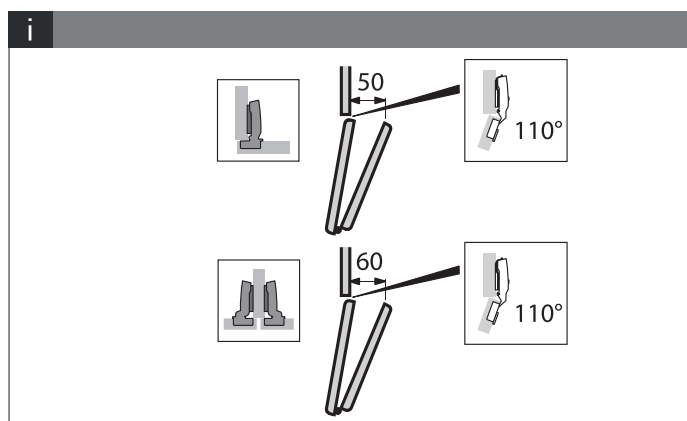


16-24 mm

**i**



**i**



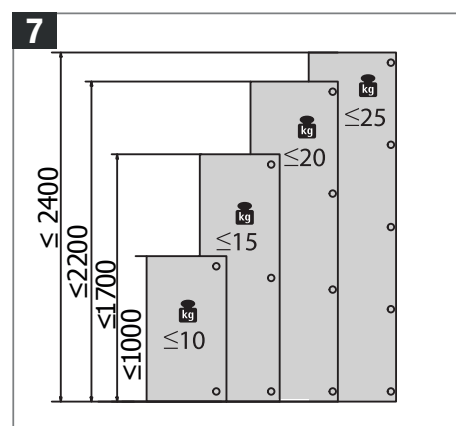
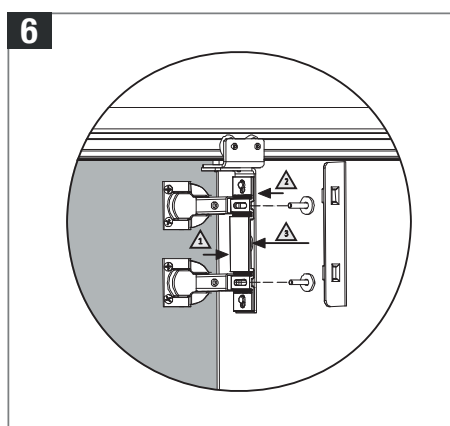
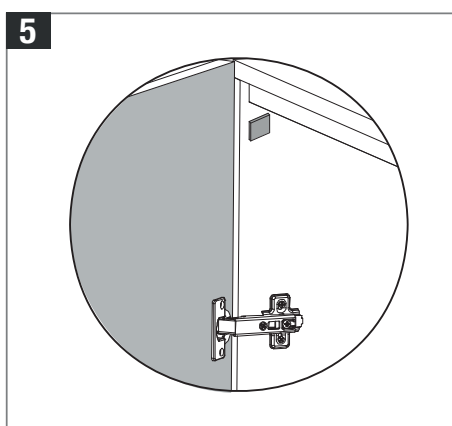
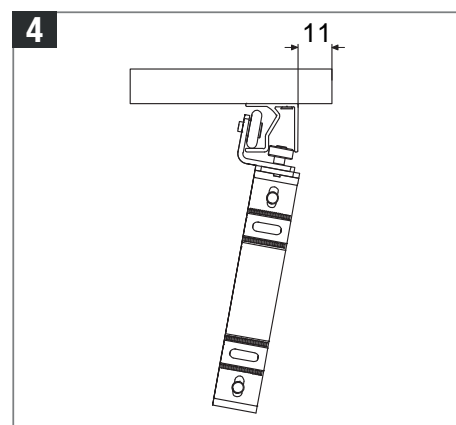
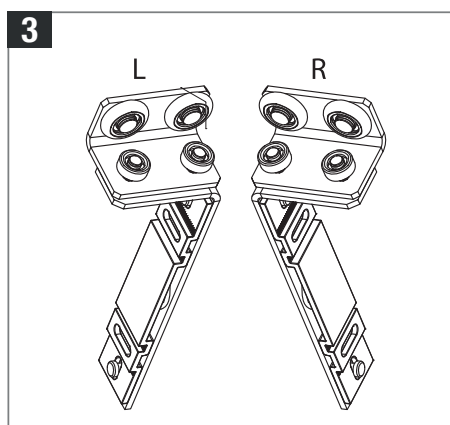
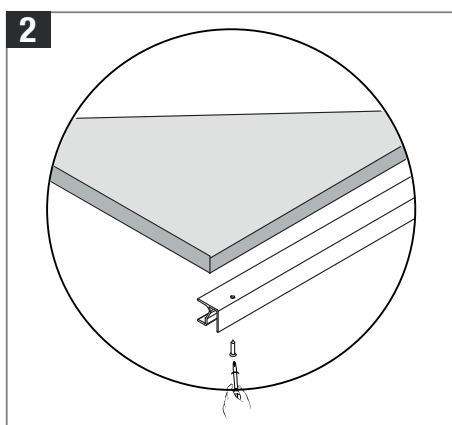
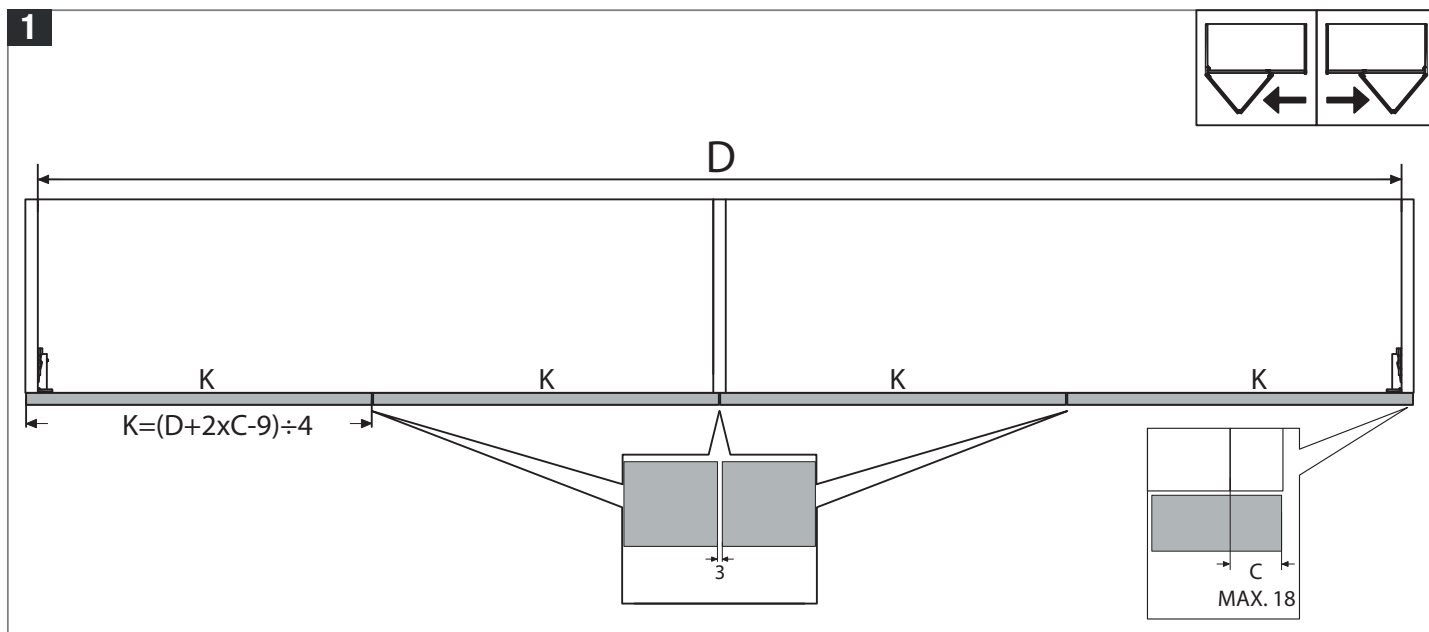
50

60

110°

110°

# Durafold Installation Manual



Please note the weights above relate to the amount of hinges connecting the first door to the carcass.