



Tommaslide 100

Straight Sliding Door System



Maximum Door Panel Weight of 100kg.



Featuring High Quality Components



Smooth Gliding Action when Operating



Full Technical Support



Soffit Fixed or Face Fitting



FastFix or Full Height Brackets

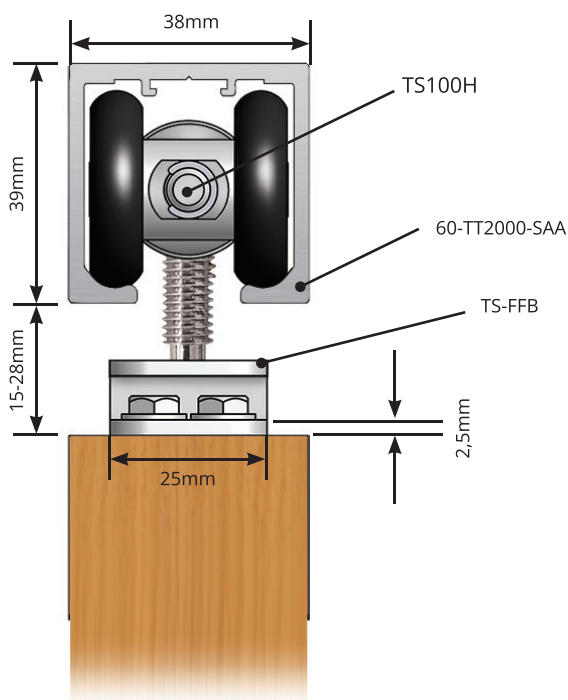
10 year warranty

On all Tommaslide Rollers

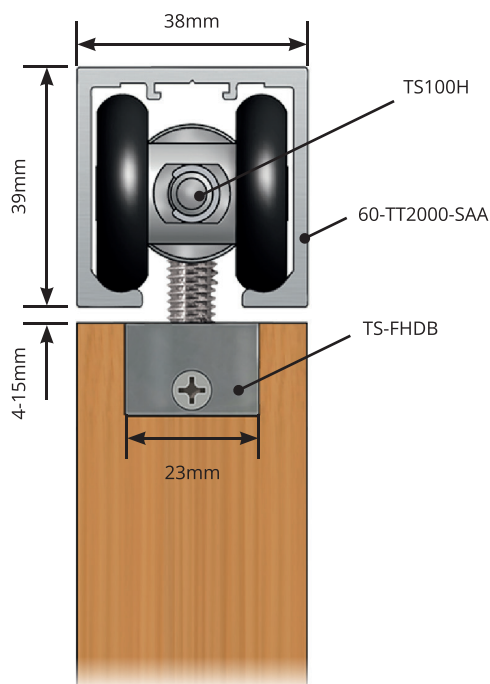
- Maximum Door Weight without Soft Close: 100kg
- Maximum Door Weight with Soft Close: 80kg
- Minimum Panel Width with Soft Close and Open: 762mm wide
- Minimum Panel Width with Soft Close: 370mm wide
- Minimum Door Thickness: 30mm thick

Door Bracket Choices

Fastfix Bracket



Fullheight Bracket



Fastfix without Softclose Kit Components

High Impact Door Stop



Code: TS100DS

4 Wheeled Door Hanger



Code: TS100H

FastFix Bracket



Code: TS-FFB

Kit Code	Stops	Hangers	FastFix Brackets
TS100FFD/0	2 x TS100DS	2 x TS100H	2 x TS-FFB

Screws are included with all kits - TS-FFB-SC | Spanner is also included - TS-SPAN-PRES

Fastfix Softclose Kit Components

High Impact Door Stop



Code: TS100DS

4 Wheeled Door Hanger



Code: TS100H

FastFix Bracket



Code: TS-FFB

Softclose



Code: TS100SC-__

Door Weight	Kit Code		Stops	Hangers	Bracket	Softclose
0-20kg	TS100FFD/1-20	Includes	1 x TS100DS	1 x TS100H	2 x TS-FFB	1 x TS100SC0-20
20-40kg	TS100FFD/1-40		1 x TS100DS	1 x TS100H	2 x TS-FFB	1 x TS100SC20-40
40-60kg	TS100FFD/1-60		1 x TS100DS	1 x TS100H	2 x TS-FFB	1 x TS100SC40-60
60-80kg	TS100FFD/1-80		1 x TS100DS	1 x TS100H	2 x TS-FFB	1 x TS100SC60-80

Screws are included with all kits - TS-FFB-SC | Spanner is also included - TS-SPAN-PRES

Full Height without Softclose Kit Components

High Impact Door Stop



Code: TS100DS

4 Wheeled Door Hanger



Code: TS100H

Full Height Bracket



Code: TS-FHDB

Kit Code	Stops	Hangers	Full Height Brackets
TS100FD/0	2 x TS100DS	2 x TS100H	2 x TS-FHDB

Screws are included with all kits - TS-FFB-SC | Spanner is also included - TS-SPAN-PRES

Tommaslide 100 Specification

Full Height Softclose Kit Components

High Impact Door Stop



x1

Code: TS100DS

4 Wheeled Door Hanger



x1

Code: TS100H

FastFix Bracket



x2

Code: TS-FFB

Softclose



x1

Trigger Plate
TSSCT

Code: TS100SC__

Door Weight	Kit Code		Stops	Hangers	Bracket	Softclose
0-20kg	TS100FFD/1-20	Includes	1 x TS100DS	1 x TS100H	2 x TS-FHDB	1 x TS100SC0-20
20-40kg	TS100FFD/1-40		1 x TS100DS	1 x TS100H	2 x TS-FHDB	1 x TS100SC20-40
40-60kg	TS100FFD/1-60		1 x TS100DS	1 x TS100H	2 x TS-FHDB	1 x TS100SC40-60
60-80kg	TS100FFD/1-80		1 x TS100DS	1 x TS100H	2 x TS-FHDB	1 x TS100SC60-80

Screws are included in kit - TS-FFB-SC | Spanner is also included - TS-SPAN-PRES

Fastfix Softclose and Open Kit Components

FastFix Bracket



x2

Code: TS-FFB

Softclose



x2

Code: TS100SC__

Trigger Plate



x2

Code: TSSCT

Door Weight	Kit Code		Bracket	Softclose
0-20kg	TS100FFD/2-20	Includes	2 x TS-FFB	2 x TS100SC0-20
20-40kg	TS100FFD/2-40		2 x TS-FFB	2 x TS100SC20-40
40-60kg	TS100FFD/2-60		2 x TS-FFB	2 x TS100SC40-60
60-80kg	TS100FFD/2-80		2 x TS-FFB	2 x TS100SC60-80

Screws are included with all kits - TS-FFB-SC | Spanner is also included - TS-SPAN-PRES

Full Height Softclose and Open Kit Components

FastFix Bracket



x2

Code: TS-FFB

Softclose



x2

Code: TS100SC__

Trigger Plate



x2

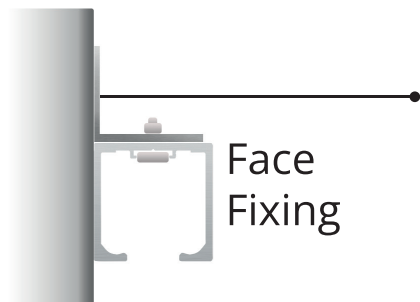
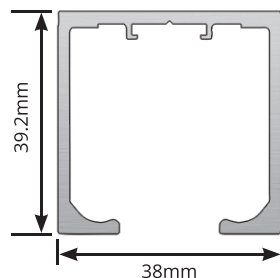
Code: TSSCT

Door Weight	Kit Code		Bracket	Softclose
0-20kg	TS100FFD/2-20	Includes	2 x TS-FHDB	2 x TS100SC0-20
20-40kg	TS100FFD/2-40		2 x TS-FHDB	2 x TS100SC20-40
40-60kg	TS100FFD/2-60		2 x TS-FHDB	2 x TS100SC40-60
60-80kg	TS100FFD/2-80		2 x TS-FHDB	2 x TS100SC60-80

Screws are included in kit - TS-FFB-SC | Spanner is also included - TS-SPAN-PRES

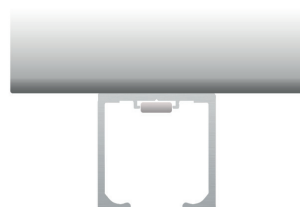
Top Track Satin Aluminium

Length	Code
2 Metre	60-TT2000-SAA
3 Metre	60-TT3000-SAA
4 Metre	60-TT4000-SAA
6 Metre	60-TT6000-SAA



Face
Fixing

Face Fixing Bracket
(optional extra)

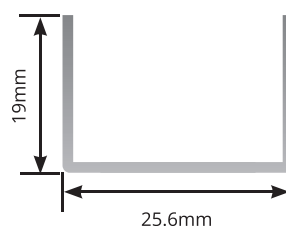


Soffit
Fixing

Code: TSFFB

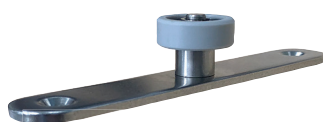
Bottom Track Satin Aluminium

Length	Code
2 Metre	10-60-BT2000-CA
3 Metre	10-60-BT3000-CA
4 Metre	10-60-BT4000-CA
6 Metre	10-60-BT6000-CA



Bottom Guides

Single Bearing Guide



Code: TS-SBG

Single Guide



Code: TS-NG

Floor Guide



Code: TS-FG

To suit doors between
30 & 60mm

