



Tommaslide 300 is a modern designed top hung sliding door system that can be operated with a weightless fingertip effort, producing a consistently smooth operating lifecycle for panels up to 300kg.

The Tommaslide can be Soffit fixed to your door frame or Face fixed to the side of your wall. All Tommaslide rollers are tested to 100,000 cycles and come with a 10 year warranty.

- **Maximum Door Panel Weight:** 300kg
- **Minimum Door Thickness:** 30mm thick



Tommaslide 300

Straight Sliding Door System



Maximum Door Panel Weight of 300kg.



Featuring High Quality Components



Simple Adjustment System



Full Technical Support



Soffit Fixed or Face Fitting

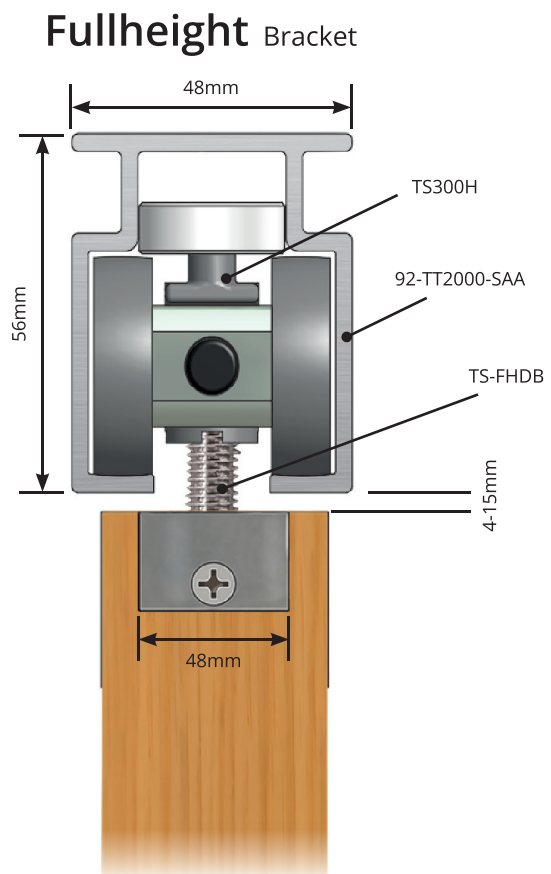
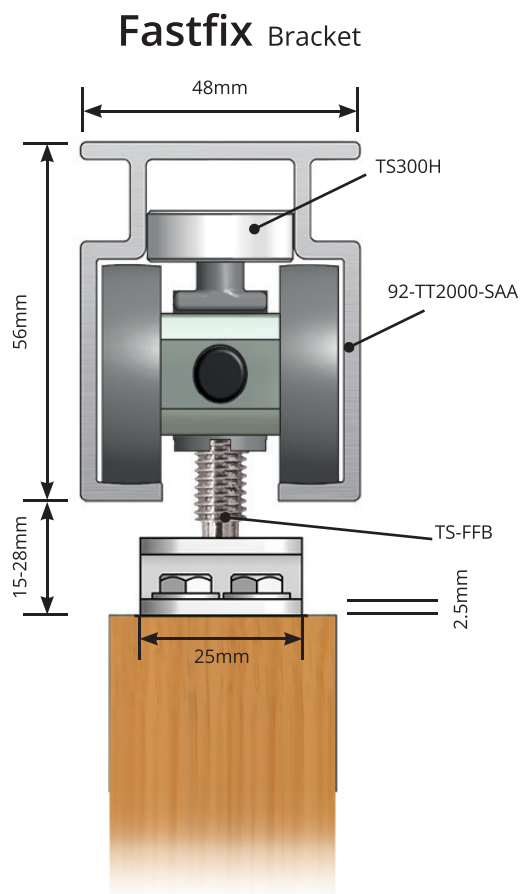


FastFix or Full Height Brackets

10 year warranty

On all Tommaslide Rollers

Door Bracket Choices



Fastfix Kit Components - Code: TS300FFD

High Impact Door Stop



Code: TS300DS

4 Wheeled Door Hanger

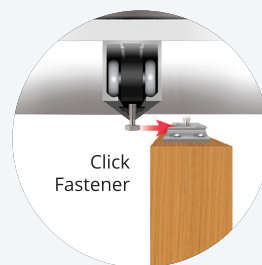


Code: TS300H

FastFix Bracket



Code: TS-FFB



Screws are included in kit - TS-FFB-SC | Spanner is also included - TS-SPAN-PRES

Fullheight Kit Components - Code: TS300FHD

High Impact Door Stop



Code: TS300DS

4 Wheeled Door Hanger

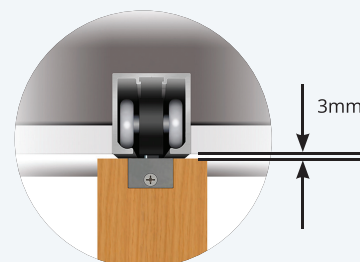


Code: TS300H

Full Height Bracket



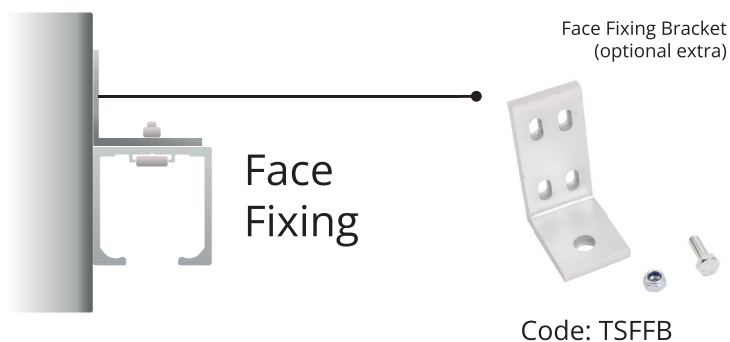
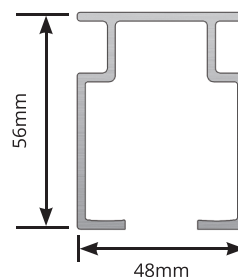
Code: TS-FHDB



Screws are included in kit - TS-FFB-SC | Spanner is also included - TS-SPAN-PRES

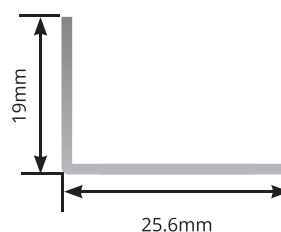
Top Track Satin Aluminium

Length	Code
2 Metre	92-TT2000-SAA
3 Metre	92-TT3000-SAA
4 Metre	92-TT4000-SAA
6 Metre	92-TT6000-SAA



Bottom Track Satin Aluminium

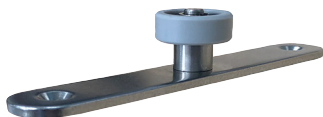
Length	Code
2 Metre	10-60-BT2000-CA
3 Metre	10-60-BT3000-CA
4 Metre	10-60-BT4000-CA
6 Metre	10-60-BT6000-CA



Tommaslide 300 Specification

Bottom Guides

Single Bearing Guide



Code: TS-SBG

Single Guide



Code: TS-NG

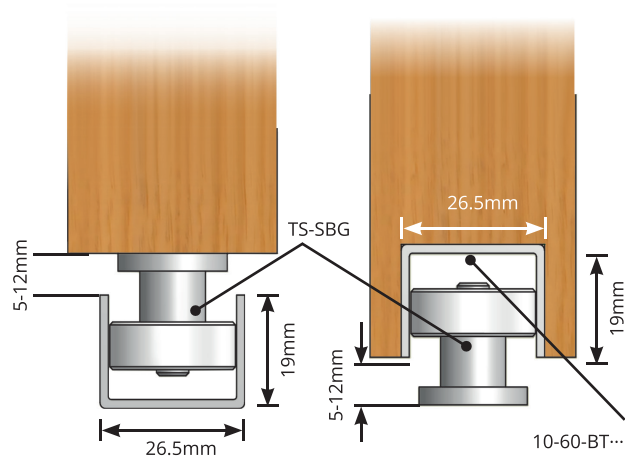
Floor Guide



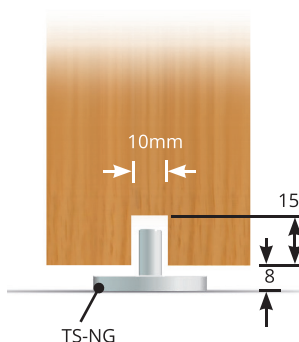
Code: TS-FG
To suit doors between
30 & 60mm

Bottom Guide Options

Single Bearing Guide



Single Guide



Floor Guide
To suit doors between
30 & 60mm

