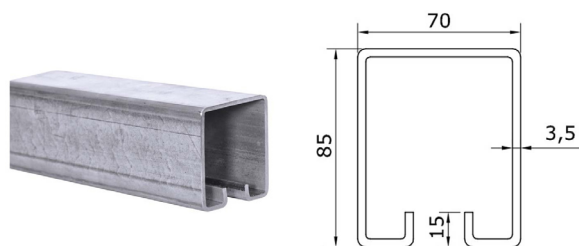
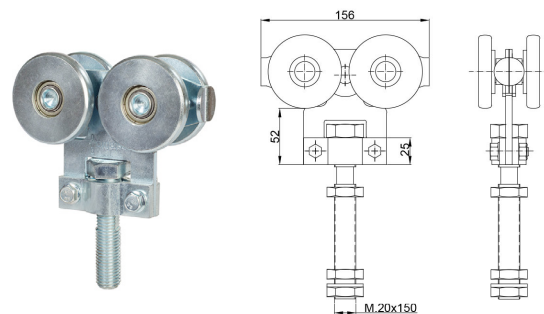


Components



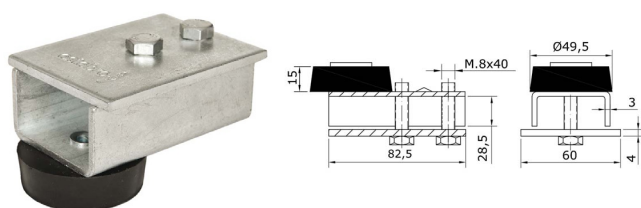
Series 2000 3m Galvanized Steel Top Track

Code: 2000-2000-3



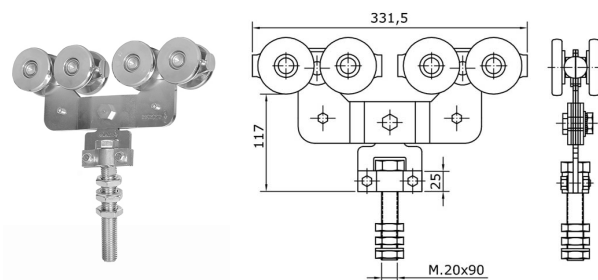
Series 2000 Double Axle Steel Wheel Hanger, M20 x 150mm Pin, 600Kg Capacity

Code: 2000-464L



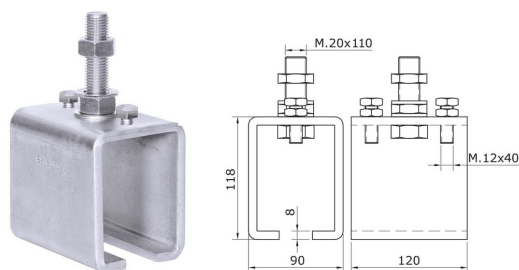
Series 2000 Track Mounted Door Stop

Code: 2000-47201



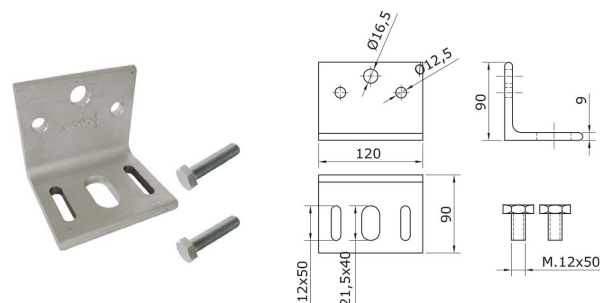
Series 2000 Quad Axle Steel Wheel Hanger, M20 x 90mm Pin, 1000Kg Capacity

Code: 2000-465L



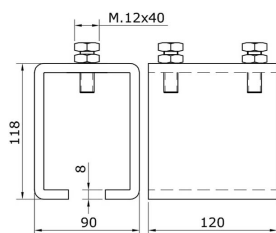
Series 2000 Adjustable Soffit Fixing Track Support Bracket For Galvanized Steel Top Track, M20 x 110mm Threaded Stud

Code: 2000-47001L



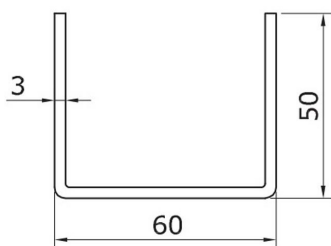
Series 2000 Double Face Fixing Track Support Suited to Adjustable Soffit Fixing Bracket

Code: 2000-47003



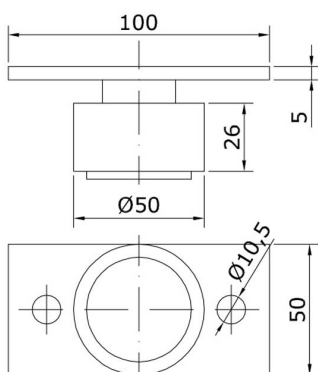
Series 2000 Track Connector
For Galvanized Steel Top Track

Code: 2000-470010



Series 2000 3m Galvanized
Steel Bottom Guide Channel

Code: 2000-5020



Series 2000 50mm Diameter
Nylon Bottom Guide Roller, On
Flat Steel Plate

Code: 2000-5026